



COMPANY PROFILE



01

About Us

02

Social Responsibility

03

Projects

04

Affiliations

05

Contact Us



OVERVIEW

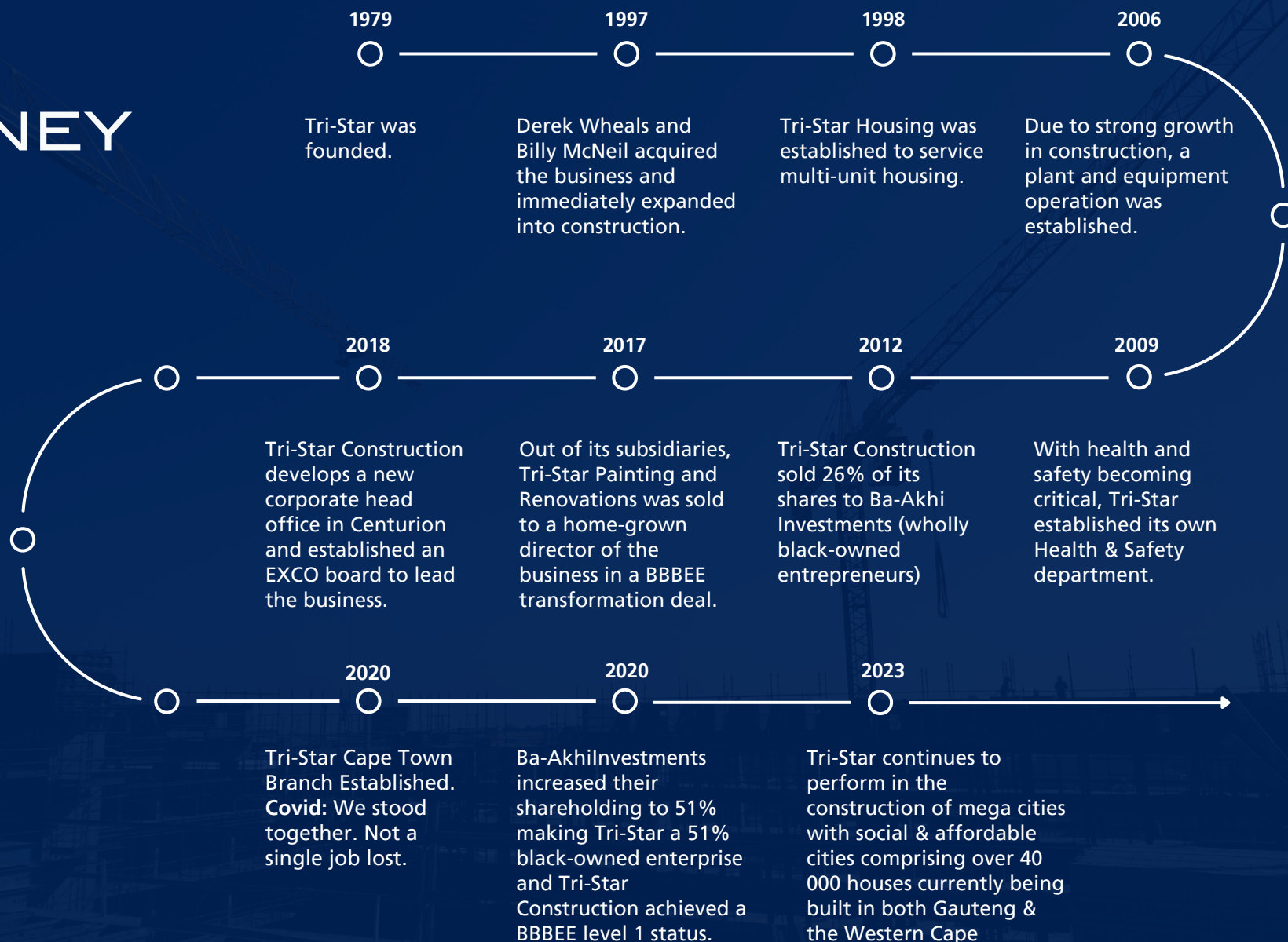


ABOUT US

1

"OUR PEOPLE ARE OUR BUSINESS" -DEREK WHEALS, CEO

OUR JOURNEY



OUR VALUES

We pride ourselves on our integrity, operating in an open and transparent way, treating people fairly and with respect.

We recognise our responsibility to all aspects of Health and Safety. We want to make a positive contribution to society through social investment, uplifting our people through training, mentorship, education, and opportunity. We build long term relationships with all our stakeholders.

We aim for excellence through innovation and collaboration to drive improved performance and deliver the best possible outcomes from our clients, our projects, our people, partners, and their wider community.

OUR VISION

Strive to be a highly capable, diversified construction company that will grow through opportunities that employ our core expertise and partnerships.

Growth will continue to be organic and controlled around our Tri-Star Construction core management, to ensure our values are infused and our culture entrenched.

Through good Corporate Governance, risk, and fiscal management we will ensure sustainability.

OUR SERVICES

At Tri-Star Construction, our experienced and highly skilled management team and workforce take a collaborative, hands-on approach to every project. We are committed to delivering safe, high-quality construction solutions that respond effectively to client needs and evolving industry standards.

With decades of experience across various sectors, we offer a wide range of services, including:


**Traditional
Building
Contracts**

**Turnkey Solutions
(Design & Build)**

**Development
Management &
Property
Development**

**Client Partnerships
& Public-Private
Partnerships (PPPs)**

**Supply &
Procurement
Solutions**



Tri-Star's proven capability allows us to successfully deliver complex projects across diverse sectors, including Multi-Unit Housing Developments, High-Rise Residential Buildings, Commercial and Office Spaces Industrial and Warehousing Facilities, Retail and Shopping Centres, Specialised and Bespoke Projects



WE DON'T JUST BUILD.

WE SHAPE ENVIRONMENTS
THAT STAND THE TEST OF TIME.

LEADERSHIP



Malose Kekana
Non-Executive Director



Albertinah Kekana
Non-Executive Chairperson



Derek Wheals
Chief Executive Officer



Pieter Swanepoel
Financial Director



Maurice Williams
*Gauteng
Managing Director*



Darryl Liebenberg
*Western Cape
Managing Director*



Stephen Aydon
Contracts Director



Mark Van Niekerk
Plant Director



Louis Opperman
Contracts Director



Daniel van Jaarsveld
Contracts Director



Martin Brits
Contracts Director



Divan Marais
*Western Cape
Commercial Director*

OUR STAFF

Our people are our business – they are our most valuable asset. Management is always available to its staff and there is open and transparent communication channels that allow for queries and issues to be addressed and resolved at any time.

Paramount to our strategy is continued investment in the training and advancement of our greatest asset, our people. This embraces procedures for regularly reviewing all aspects of our business and the motivation of our people.

We recognise the value of our human capital and create value for our employees through:

A merit-based rewards system of competitive remuneration. Recognition and career advancement through training, education, and mentorship to encourage a collaborative range of skills and solutions.





"EVERY GREAT PROJECT BEGINS
WITH A SOLID FOUNDATION, IN
PLANNING, IN PEOPLE, AND IN
PURPOSE."

HEALTH & SAFETY EXCELLENCE

At Tri-Star Construction, health and safety are not just priorities, they are foundational to everything we do. Our dedicated Health & Safety division ensures that we consistently meet and exceed the stringent standards set by the Master Builders Association North (MBA North), underscoring our unwavering commitment to the wellbeing of our employees, clients, and communities.

We believe that a safe work environment reflects our core values: people, professionalism, and excellence. This belief is embedded in our proactive safety culture, comprehensive training, and rigorous on-site protocols.



MBA NORTH REGIONAL SAFETY COMPETITION AWARDS

Every award reflects our high standards, team dedication, and unwavering commitment to creating safe, efficient, and compliant work.

2023

Category C (Less than R15M)
1st Place: Wits Hillman House

Category D (R15M–R40M)
1st Place: Riverside Ext 69

Category E (R40M–R100M)
3rd Place: The Iris Phase 3

2024

Longstanding Member Award:
Tri-Star Construction (Pty) Ltd

Category E (R40M–R100M)
1st Place: Crown Mines
Shopping Centre

Category F (R100M–R250M)
2nd Place: Westcliff FSHJ
Phase 2

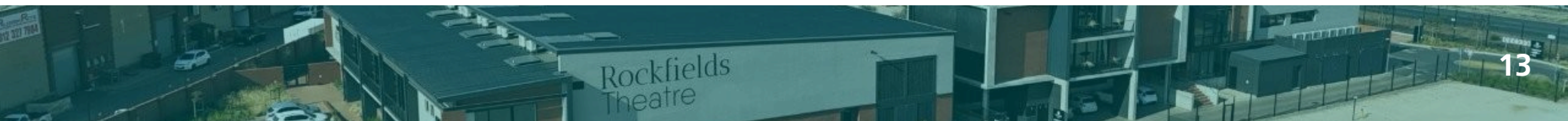
2025

Category G (R250M to R450M)
1st Place: WITS Zylstra

Category F (R100M to R250M)
3rd Place: Melrose Apartments

Category D (R15M to R40M)
3rd Place: FORD Paint Shop

Special Award
**Best Construction Manager of
the Year:** Prince Mabuza



PLANT & EQUIPMENT



Established in 2006 as a subsidiary of Tri-Star, Tri-Star Plant and Equipment was founded to support our expanding business and rapid growth.

The primary function of Tri-Star Plant and Equipment is to provide essential services to Tri-Star Construction by supplying and maintaining construction plants, equipment, and machinery to the highest standards. With its own dedicated premises and management team, Tri-Star Plant and Equipment ensures that our projects are equipped with reliable and well-maintained resources, contributing to the overall success of our operations.

Plant Yard Key

- | | |
|----------------------------------|--|
| A: Surplus Site Material | H: Scaffolding Spray Bay |
| B: Containers & Parkhome Storage | I: Scaffolding Washbay, Clean & Repair Bay |
| C: Scaffolding Delivery Bay | J: Scaffolding Collection Bay |
| D: Carports | K: Tender Equipment |
| E: Plant Bay | L: CETA Accredited Training Facility |
| F: Plant Yard Office | M: Accommodation / Office Area |
| G: Workshop Area | |

KEY STATISTICS

LEVEL 1
B-BBEE Status



14 000+
Student Beds Built



981 million+
Brick Laid



45
Year in Business



37 million+
Man Hours Created



40 000+
Affordable Housing Dwellings Built



6.1 million m³ +
Concrete Poured



443+
Commercial, Industrial
and Retail Buildings Built



600+
Completed Projects





SOCIAL RESPONSIBILITY

2

"THE ROAD TO SUCCESS IS ALWAYS UNDER CONSTRUCTION" -LILY TOMLIN

TRANSFORMATION & B-BBEE

Transformation, led by the Department of Trade and Industry, aims to broaden South Africa's economic base by empowering historically disadvantaged individuals.

At Tri-Star, we proudly support this agenda. We've achieved B-BBEE Level 1 status through real change in our ownership and leadership structure, with 51% black ownership, equally shared between black women (25.5%) and black men (25.5%).

True empowerment, we believe, strengthens both our company and the communities we serve.



TRAINING & SKILLS DEVELOPMENT

Our people are our greatest asset.

Through our in-house bursary scheme and structured mentorship programmes, we invest in skills development across all levels.

Since launching our Training Academy in 2020, we've welcomed CETA-funded apprentices annually, including electrical and plumbing learners, many of them young women, from communities such as Diepsloot, Clayville, Ivory Park, Soweto, Roodepoort, and Fleurhof.





INVESTMENT IN COMMUNITIES

We're committed to uplifting the communities where we work. At each project's start, we assess local needs and select a community project through our CSI Fund, in partnership with residents.

We support job creation by mentoring SMMs and helping them participate in our projects. We also invest in youth by enrolling them in our Tri-Star Training Academy for hands-on construction apprenticeships, building skills for long-term employment.





PROJECTS

3

"WHATEVER GOOD THINGS WE BUILD END UP BUILDING US." –JIM ROHN

COMMERCIAL PROJECTS



36 Hans Strijdom

Client: Growthpoint Properties
Architect: Paragon Architects

- Structural and architectural alterations
- Interior and exterior finishes
- Specialist system installations



Radisson Hotel

Client: Akani Properties
Architect: Bentel Associates International

- Construction of hotel
- Topfloorsky bar/restaurant
- 5 floors consist of 248 rooms



Centurion Square

Client: Professional Provident Society
Architect: Boogertman & Partners

- Office development in 2 phases
- P grade office blocks
- 5 Star Green Rating



Clientele

Client: Clientele Properties East
Architect: AMA Architects

- 4 levels of offices
- 2 levels of basement parking
- 6 000 m2 in total



Marriott Hotel

Client: Amdec Property Investments
Architect: Osmond Lange Architects & Bentel Associates International

- 5 storey basement
- 8 floors hotel
- 8 storey apartments



The Iris

Client: Abrosie Bothers (Pty) Ltd
Architect: Local Studio

- Construction of the structure and glazed façade of a multi-storey mixed use development.

COMMERCIAL PROJECTS



Amdec House

Client: Amdec Property Investments
Architect: Osmond Lange Architects

- Construction of new mixed use office development



Renew-It

Client: Mile Investment 225 (Pty) Ltd
Architect: Pattichides & Partners

- Construction of a 7,500m² purpose-built auto body repair facility for Renew-It Sandton, designed to accommodate advanced vehicle repair technologies and operations.



Rockfields Village

Client: Rockfields
Architect: Kerf Architects

- Comprehensive village construction including key infrastructure.
- Integration of external and ancillary works.
- Enhancements for improved functionality, access, and aesthetics.



Hatfield Motors Phase 1 & 2

Client: Hatfield Property Holdings
Architect: Sage Architects

- Proposed 5-storey motor dealership with rooftop level.
- Features plaster and shopfront façade for a modern look.
- Designed for functionality and visual appeal.



Four Seasons Hotel The Westcliff

Client: 80 Westcliff
Architect: DSA Architects South Africa

- Construction of Banquet Hall and Lobby
- Enhances luxury hospitality and event offerings.
- Built to meet premium design and quality standards.



WITS Digital Dome

Client: University of the Witwatersrand
Architect: Kate Otten Architectural Services

- Phase 2 building works for Wits Digital Dome under the Framework Contract.
- Part of major construction within Wits Braamfontein Campus.
- Enhances university infrastructure and innovation capacity.

COMMERCIAL PROJECTS



Oxford Hive

Client: Ashton House
Architect: Boogertman & Partners

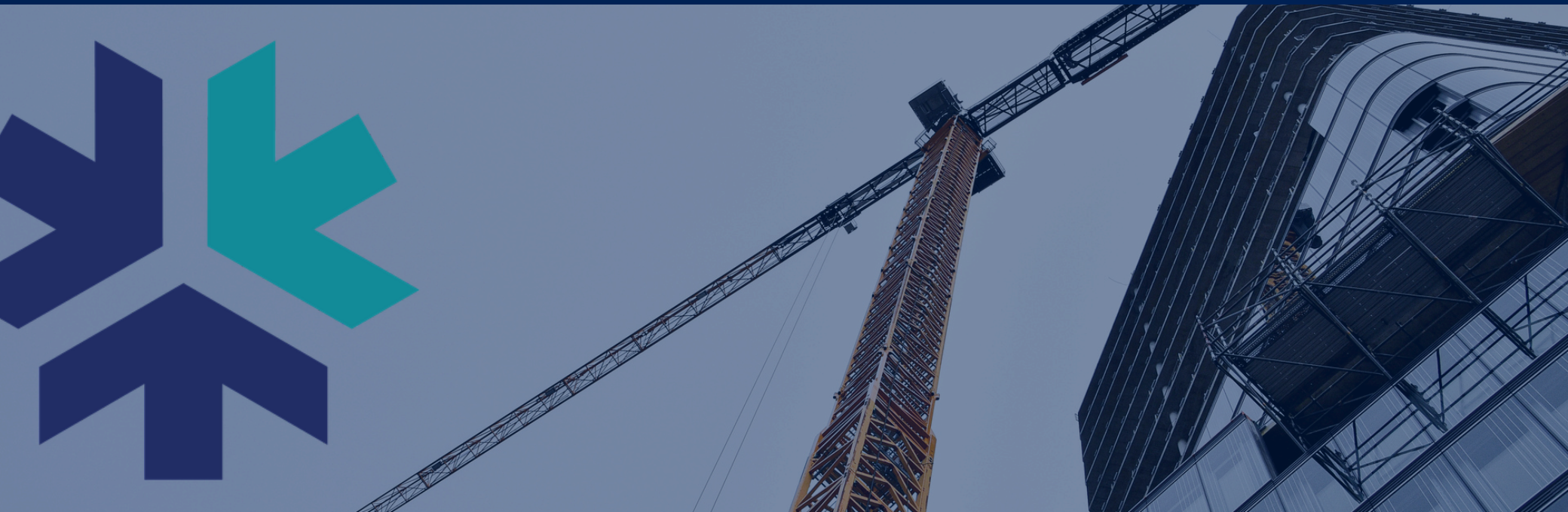
- Construction of 200 luxury apartments 10 storeys
- 383 parking bays



New Market Leroy Merlin

Client: Rejem-Linton JV
Architect: SVA International (Pty) Ltd

- Development of a new Leroy Merlin store, purpose-built to accommodate the brand's expansive home improvement and DIY retail offerin



RETAIL PROJECTS



Rlverstone Mall

Client: Alley Roads
Architect: Frans Farmer Architects

- 18 000m² mall with top national retailers.
- Full site works: services, roads, landscaping.
- Built for function and visual appeal.



Midwater Centre

Client: Patricio & Sons
Architect: DBM Architects

- 22 000m² shopping centre.



Riverside Square Shopping

Client: Riverside Square
Architect: MDS Architecture

- Retail centre anchored by Shoprite and Cashbuild.
- Meets daily needs with essential retail offerings.
- Built for accessibility and long-term growth.



Lonehill Shopping Centre

Client: Immobile Retail Investments
Architect: LP Architects

- The complete refurbishment of the existing mall including the addition of 12 000m²



Dlamini Shopping Centre

Client: Loxicept (Pty) Ltd
Architect: Franzsen Architects

- 19 000m² shopping centre.
- New Dlamini Shopping Centre with 25 stores and a 3,200m² Shoprite.
- Features 3 drive-throughs, taxi rank, car wash, and loading bays.
- Includes 589 parking bays and attenuation ponds.



Mamelodi Square Shopping Centre

Client: Putprop Limited (Pty) Ltd / McCormick Group
Architect: MDS Architects

- Construction of a 16 000m² shopping centre.

RETAIL PROJECTS



Brightwater Commons Shopping Centre

Client: Allan Grey Properties
Architect: Frame Architects

- Full redevelopment of Randburg's old waterfront.



Chilli Lane Shopping Centre

Client: Luxanio Trading 180
Architect: Boogertman & Partners

- 13,000m² retail centre upgraded in Sunninghill.
- Improved parking, landscaping, and layout.
- New security fencing for added safety.



204 Oxford

Client: Capital Propfund 3
Architect: Bau Africa

- Refurbishment includes upgraded parking slab, ramp, and walkway.
- Façade improvements enhance building appearance.
- New Woolworths store added.



RESIDENTIAL PROJECTS



The Herringbone

Client: Divercity Urban Property Group
Architect: Gass Architecture Studios

- 398 affordable rental units
- 930m² retail with leisure, co-working, and communal spaces
- Clubhouse, gym, and private courtyard terrace



Lavelle Valentia

Client: Real City Holdings (Pty) Ltd
Architect: Hofman Architects

- 300-unit complex
- Five 6 storey buildings
- Play area, gatehouse, landscaped courtyards, and ample parking.



The Paddocks

Client: International Housing Solutions
Architect: DBM Architects

- 384 sectional title units comprising three storey blocks



Grand Central Towers

Client: Bridgeport No.105 (Pty) Ltd
Architect: E3 Property Developments

- 990 Social Housing Walk-up Units comprising of a ground floor plus 9 storeys



The Village

Client: International Housing Solutions
Architect: Boogertman& Partners

- 284 sectional title walk-up residential units across eight separate blocks



Saxon Square

Client: CPDev
Architect: Distill

- Mixed-use with residential, retail, and office spaces.
- Includes sustainable design and green areas.
- Prime Rosebank location with great access.

RESIDENTIAL PROJECTS



Infinite

Client: Fatasy Property
Architect: AMA Architects

- Construction of 200 luxury apartments 10 storeys
- 383 parking bays



Melrose Apartments

Client: Primrose Property
Construction
Architect: Rehman & Associates

- Construction of a new 7-storey upmarket apartment building with basement parking, comprising 67 premium residential units.



Ferdale Place

Client: GNI Social Housing
Architect: E2 Architects

- 8-storey affordable housing complex.
- The development includes 585 residential units.
- Designed to provide quality, accessible housing.



Central Park

Client: One Property Holdings
Architect: Alsine & Angus Architects

- Multi-phase project includes two new 7-storey buildings as part of an integrated urban expansion. Phase 2 features AAC block walling for internal partitions, offering better thermal performance, fire resistance, and faster construction. Phase 3 introduces a mixed-use building with commercial and residential spaces.



STUDENT ACCOMMODATION PROJECTS



City Edge (Cape Town)

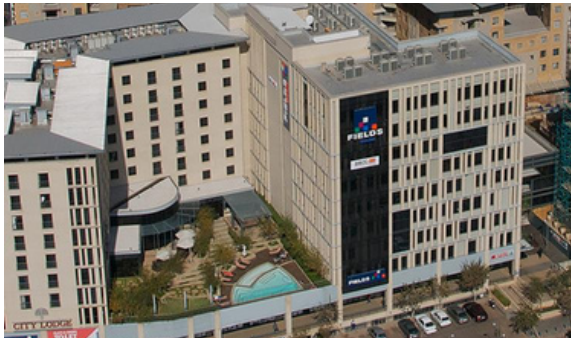
- Client: Xclutorque (Pty) Ltd
- Architect: Jordaan Architects (Pty) Ltd
- 577 student beds in 169 apartments comprising of two or three storeys



TMM Lofts

Client: TMM Holdings
Architect: Urban Concepts

- 868-bed student accommodation completed in just 12 months.
- Fast-tracked construction without compromising quality.



The Fields

Client: City Properties
Architect: Studio 3 Architects

- Student accommodation and mixed-use development
- Rooms for 300 students



Apartments on William

Client: Caliber 651
Architect: Deon vd Westhuizen Architects

- Residential student accommodation comprising of seven storeys with 319 units



Studios @ Burnett

Client: Feenstra Group
Architect: Boogertman & Partners

- Prestigious 15-storey student accommodation in Hatfield with 750 units and 1,100 beds.
- Includes 2 parking levels, study centres, laundromat, and games rooms.
- Designed for modern student living with quality shared spaces.



WITS Junction

Client: Rowmoor Investments 616
Architect: Boogertman & Partners

- 13-storey student accommodation with 1,200 beds.
- Built for high-density, modern student living.
- Includes essential amenities for comfort and convenience.

STUDENT ACCOMMODATION PROJECTS



Brooklyn House Phase 2

Client: Lynwood Mile Two
Architect: Boogertman & Partners

- 4-storey student residence.
- 232 units with 247 student beds.
- Includes secure basement parking.



Hillcrest Student Accommodation

Client: Caliber Properties (Pty) Ltd
Architect: Meg Architects

- Development of a 10-storey student accommodation facility offering 184 fully serviced units.



Brooklyn House Phase 3

Client: Lynwood Mile Three
Architect: Boogertman & Partners

- 8-storey student residence with 221 units and 297 beds.
- Features basement parking and padel courts.
- Built for modern, active student living.



MEGA CITY HOUSING PROJECTS



Riverside Precinct

Client: Valumax Northern Farms
Architect: New Urban Architects

- Mega City comprising of 4000 social and affordable units and 1 shopping centre



Jabulani

Client: Calgro M3 Developments
Architect: Calgro M3 Developments

- Mega City comprising of 1500 social and affordable units



Clayville Precinct

Client: Valumax (Pty) Ltd
Architect: GWA Architects

- Mega City comprising of 5100 social and affordable units



Belhar (Cape Town)

Client: Calgro M3 Developments
Architect: CTE Consulting

- Construction of social and affordable housing
- 4 blocks of 4-storey walk-up buildings
- Bulk services, roadworks, and landscaping included



Fleurhof

Client: Calgro M3 Developments
Architect: GWA Architects

- Mega City comprising of 2150 social and affordable units



Tanganani

Client: Valumax (Pty) Ltd
Architect: New Urban

- Mega City - Phase 1 comprising of 680 free standing affordable units

INDUSTRIAL PROJECTS



DB Schenker

Client: JT Ross Properties
Architect: Empowered Spaces

- Construction of a 10,000 m² warehouse featuring integrated ablution blocks and a designated canteen area.



Peri

Client: Peri Formwork Engineering
Architect: Osman Lange Architects

- Comprehensive building, industrial, and civil works executed by Tri-Star Construction for the development of a new warehouse.



The Stables

Client: Vunani Properties
Architect: Roger Davies Architects

- Fully integrated mini factory, warehouse, and office development, designed to meet modern industrial and commercial needs.



United National Breweries

Client: United National Breweries
Architect: D&I Associates

- Construction of a modern, high-performance brewery equipped with advanced brewing technology.



Crusader Logistics

Client: JT Ross Properties
Architect: Empowered Spaces

- Construction of warehouse within the Plumbago Business Park, tailored for modern industrial use.



Renew-It

Client: Mile Investments 225
Architect: Pattichides & Partners

- New 7,500 m² auto body repair centre

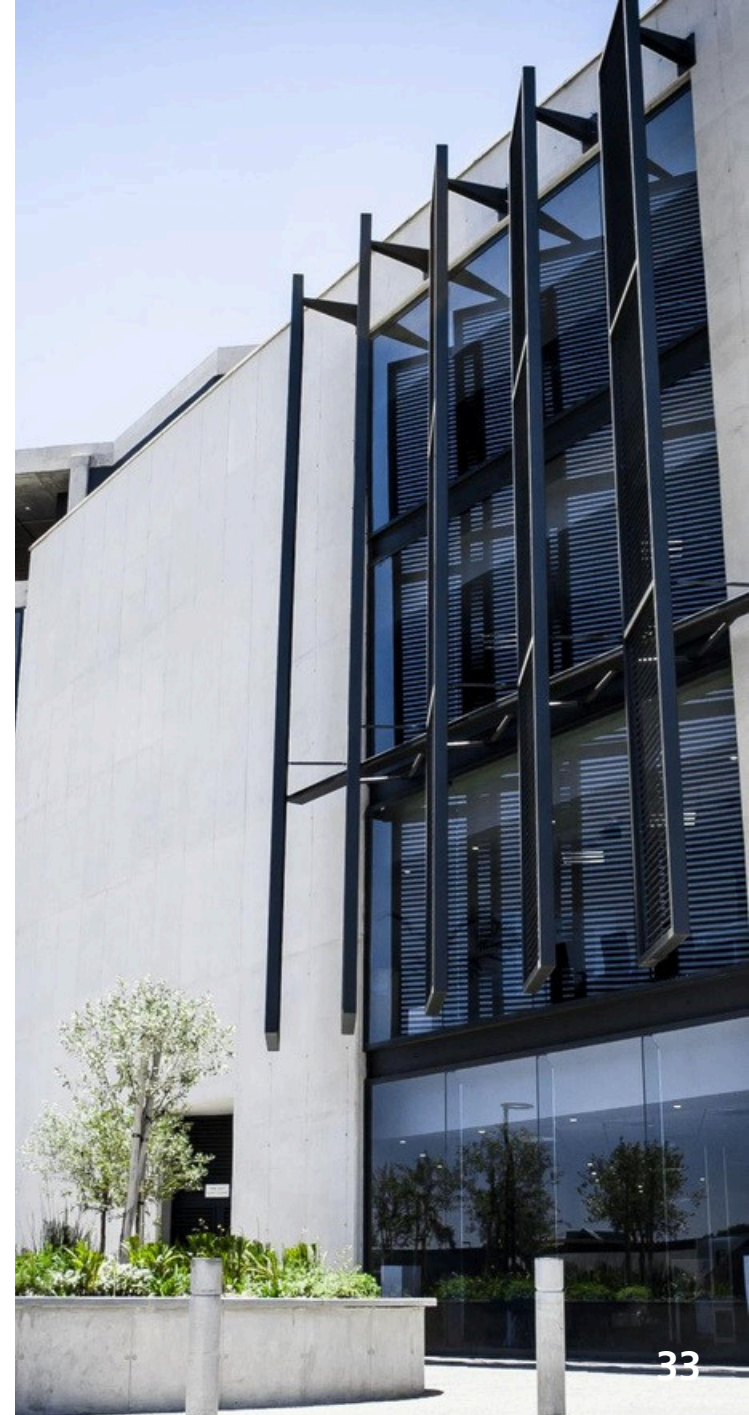
ARCHIVED PROJECTS

- 108 Fox Street - Metropolitan Building
- 108 Fox Street - Metropolitan Building
- 131 On Queens
- 184 Joshco Units
- 204 Oxford
- 226 Brakpan Road
- 268 Brooke Street
- 36 Hans Strijdom
- 400 Stand Alone Units
- 5 Showhouses - Birchleigh
- 51 Juta Street
- 922 Park Street Student Accommodation
- A.J. Broom
- Absa Kruis Street
- Absa Melville
- Absa Midrand
- Absa Vanderbijlpark
- Achter Road Office Conversion
- Acra Training Academy
- Act - Meadowdale
- African Leadership Academy
- African Leadership Academy
- Apartments On William Ashford
- Afrikings
- Afrox
- Air Menzies International
- Aj Broom
- Alberton Ford Barloword
- Alberton Mall
- Allandale Park
- Alrode Warehouse
- Amdec House
- Amka Raw Materials Warehouse
- Anchor Industrial Park
- Apartments On William
- Armsta - 93 On Fourth
- Ashbourne
- Ashford
- Ashton Manor
- Astral - De Hoek
- Atrium At 45
- Avi DC Isando
- Avi Isando Entyce - Fic & Chicory Building
- Avi Water Treatment Plant
- Bali Villas
- Barons Woodmead Redevelopment
- Bastion Graphics
- Bathroom Bizarre
- Baw Project Anvil
- Bedford Gardens Hospital
- Bedworth Centre
- Belgrade Paving
- Belhar (Cape Town)
- Benoni Heights
- Benoni Oncology Centre
- Bentley Office Park
- Bertrams Student Housing
- Bevcan - Meadowdale
- Bex Alterations
- Bhhw Warehouse
- Bhp Billiton
- Birchleigh Nx4 Typology
- Blubird Shopping Centre
- Blubird Shopping Centre
- Blum Warehouse & Office
- BMW Dealership & Fitment Centre
- Bophelong Psychiatric Hospital Ph3
- Bosman Building
- Boulders Shopping Centre
- Bowling Street
- Bramley Hotel Pahse 1 & 2
- Brampton
- Brenthurst Clinic Phase 1A & 1B
- Brentwood Estate
- British Council
- Brooklyn House Phase 2 & 3
- Brooklyn Square Shopping Centre
- Brooklyn Studio
- Bryanston Boundary Wall
- Buh Rein Residential - Lump Sum
- Bull Brand Krugersdorp
- Bullbrand - Substation 4 Upgrade
- Calgro South Hills
- Campus Central @ St Davids Place
- Campus Central Hillcrest
- Campus Central The Albany
- Cargo Carriers
- Cartiera
- Cash Crusaders Plumbago Warehouse
- Casseys Auto
- Castellano
- Castle Gate – Value Retail
- Caversham
- Caversham Apartments
- CBD Residency - Sunnyside
- CBD Residency Cherrystone
- Central Park
- Centre
- Centurion Close
- Centurion Square
- Century City - Parklane
- Ceramic Industries
- Cez Arkwright Residential
- Cez Midway Residential
- Charlotte Maxeke Hospital
- Checkers Daspoort
- Checkers Waverley
- Cherrystone
- Chilli Lane Shopping Centre
- Chrysler Jeep Dodge Dealership
- City Edge (Cape Town)
- Clayville Precinct
- Clientele
- Crusader Logistics
- Dainfern
- Dawn Road Residential
- DB Schenker
- Design Square Brooklyn
- Diagonal Street
- Dlamini Shopping Centre
- Doe Munpen Refurbishment
- Don Suite Hotel Refurbishments
- Dr Sk Memorial Hospital Renovations
- Drivelines Residential
- Dynamic Prop New Building
- E-Media Studios
- East Rand Value Mall
- Eastgate Shopping Centre
- Ellies
- Emfuleni Golf Club
- Empire State Building
- Engen Sm Motors
- Essenby House Phase 11 Exxarro
- Eswatini - Residential 2 At Malkerns Square
- Eswatini - Retail 2 At Malkerns Square
- Etwatwa Crossing
- Evander 29 Houses
- Exxaro - Head Office Upgrade
- Ey Project
- Ezulu Private Game Reserve
- Fasser House
- Featherwood Estate
- Ferndale Place
- Fiat Boksburg
- Five Star Junction
- Fleurhof Shopping Centre
- Flora Life Clinic (Refurbishment)
- Flower Market
- Ford (Multi-Phase)
- Four Seasons Hotel The Westcliff
- Fourways Gardens Clubhouse Gde Benoni
- Frank & Hirsch
- Freevay Park 272 Units
- Garden City Clinic
- Garden Court Hatfield
- GDE Springs Avenue Towers Gillooly's View
- Generator Diesel Tanks
- Gillooly's View
- Glen Starling Housing
- Goodwood Station Housing
- Grand Central Towers
- Grand Chateaux
- Grayston Office Park
- Greenstone Game Reconfiguration Project
- Greenwood Square
- Gromer Project X
- Gw176 - South African Reserve Bank
- GWM & Suzuki Renovations
- Gyro Germiston Student Accommodation
- Gyro Marshalltown Student Accommodation
- Hatfield Motors Phase 1&2
- Hammanskraal Pedestrian Bridge
- Hampton Office Park
- Helen Road
- Hermaflex
- Hertford - Building L
- Highlands Shopping Centre
- Hillcrest Student Accommodation
- Hino Trucks
- Holding 24 Linbro Park - Bulk Earthworks
- Hollyberry
- Ilitha Mall
- Imison - 4 Stan Road
- Infinite
- Ingrain Mill (Refurbishment)
- Innovation Group
- Jabulani
- JHB Water Head Office
- Jumbo Mall - Witbank
- Kargo Logistics
- Kathu Heritage Mall - Centre Upgrades
- Kees Beyers
- Kelvin Apartments
- Kempton Towers
- Kemton City
- Kensington Clinic
- Keywest Shopping Centre
- Khan's Corner
- Kiepersol Building
- Kingdom Resorts - Node E
- Krones Warehouse
- KSB - Admin Building
- KSB Supreme Serv
- Kumba Resources
- Landrover Eastrand
- Lavelle Valentia
- LDS Church
- Leaping Frog Centre
- Lenmed Wilmed Cardiac Project
- LHC Faerie Glen - Refurbishment
- Life Hospital - Flora Clinic
- Lighting Warehouse
- Lightstone
- Linbro Park
- Lonehill Shopping Centre Mayville Mall
- Longmeadow Business Park
- LXX Sandhurst
- Madudeni Hostels
- Mahikeng Student Accommodation
- Malibongwe Ridge Residential
- Mall Of The South
- Mamelodi Square Shopping Centre
- Man Turbo - Hardstand
- Manhattan Hotel Refurbishment
- Marriott Hotel
- Mayville Mall
- Meadowdale Warehouses
- Medihelp Office Refurbishment
- Mega City Mall
- Megamark Mall
- Meleste Game Reserve
- Melrose Apartments
- Melrose Square Development
- Menlyn Corporate Park
- Menlyn Junxion
- Menlyn Mezzanine Fitout
- Menlyn Multifranchise Redevelopment
- Merbrook
- Midwater Shopping Centre Phase 2
- Montebello
- Mount Grace Hotel & Spa
- Mountain View Shopping Centre
- New Market Leroy Merlin
- Novo Energy Gas Station
- Nugget Student Accommodation
- Oakland Houses
- Olive Grove - Pocket 1A
- Omni Square Bassonia
- Opera Plaza
- Orlek Meadowdale
- Orton Mews
- Oxford Hive
- Paarlweb Media
- Pan African Shopping Centre
- Panasonic
- Park Pick 'N Pay Pretoria
- Park Station Imisson
- Park Street (TMM Lofts)
- Parktown Boys Hostel
- Peri Head Office And Yard
- Pick 'N Pay - West Street
- Pick 'N Pay Bright Water Commons
- Pick 'N Pay Craighall Park
- Pick 'N Pay Pretoria
- Pick 'N Pay Quagga Centre
- Pick 'N Pay Rivonia



ARCHIVED PROJECTS

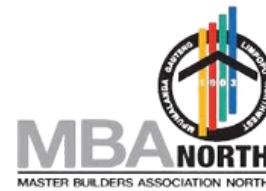
- Pimville Student Accommodation
- Pinnacle College - Ridgeview
- Pirates Building
- Pixley House
- Plumbago
- Porchester Housing
- Princess Crossing
- Quattro Fontane - Tri-Star Head Office
- Radisson Hotel - Park-Inn
- Regent Hill Office Park
- Renew-It
- Riverly & Pennyville Ext 1 - Erf 1355
- Riversands Training Centre
- Rivers Church
- Riverside Precinct
- Riverside Shopping Centre
- Riverstone Mall
- Riverview Shopping Centre
- Riverwalk Office Park
- Robot Hardware
- Rockfields Village
- Rockwell Automation
- S P I
- SA Army Foundation
- SA Reserve Bank - Cit Entrance Repairs
- SA Reserve Bank - Modular Washbay - Level B1
- Safubi Residential Development
- Saintsburg Corner Block B
- Salt
- SAMRO Offices
- Sandown Block A
- SARB Tower Block Refurbishment
- SASRIA
- Saxon Square
- Scottsdene
- Setsing Plaza
- Sherbourne Estate
- Soshanguve 255 Units
- Soshanguve Affordable Units
- South Hills
- Sparks School Riversands Ph3
- Sportsman's Warehouse - Witbank
- Ssb Factory Site Upliftment Projects
- St Albans College
- St Stithians College
- Standard Bank Ablutions
- Standard Bank Centurion
- Standard Bank Quagga Centre
- Stanley Studios Demolitions
- Stone River Valley Project
- Studios @ Burnette
- Sugar Bush Residential
- Sundowns Wall
- Surestream Business Park
- Takealot Polokwane
- Talavera
- Tanganani
- Tannenber
- Tau Building
- TCTA (Trans Caledon Tunnel Authority)
- Tembisa Plaza
- Thatchfield Retail Park
- The Falls - New Ford Dealership
- The Fields
- The First Rosebank
- The Forum
- The Glades
- The Herringbone
- The Homage
- The Hub
- The Iris
- The Links
- The Paddocks
- The Saints
- The Stables
- The Stanford
- The Unison
- The Village
- Thermaflex
- Thlabane West Social Housing
- Thornwood Place
- TMM Lofts
- Torah Academy Girls High School
- Tottenham Road Hotel
- Toyota Dealership
- Trinity Cables
- TUT Lecture Halls
- Twickenham Road
- Unilofts
- United National Breweries
- United Randburg
- Units On Birbeck
- Units On Jorissen
- Units On Nala
- Value Logistics
- Varsity College
- Vector Logistics
- Veray Village
- Victory Park Woolworths
- Villa Di Castello
- Village Vie
- Virgin Active Lonehill
- Viva Gym Hillfox
- Vodaworld
- Volkswagen
- VW Midrand
- Waterkloof Park Residential
- Waverly Hotel
- Wessel Road Office Building
- Westgate Generator Farm
- WITS Digital Dome
- WITS Junction
- Wizard Clothing – Meadowdale
- Woodmead Auto
- Woodmead Commercial Park





CREATING SPACES WHERE
LIFE HAPPENS.

AFFILIATIONS





CONTACT US

GAUTENG

+27 12 687 1000

info@tri-star.co.za

www.tri-starconstruction.co.za

Irene Corporate Corner
33 Via Salara Crescent
Irene, Centurion
0157

WESTERN CAPE

+27 21 001 0062

info.cape@tri-star.co.za

www.tri-starconstruction.co.za

47 Owl Street
Joostenbergvlakte
Cape Town
7570