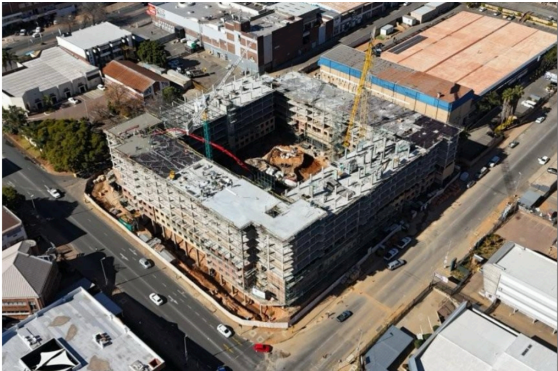


FERNDALE PLACE



Client: GNI Social Housing (Pty) Ltd

Architect: E2 Architects

PQS: Farrow Laing Quantity Surveyors

Principal Agent: Farrow Laing Quantity Surveyors

Engineer: Struxit

Project Value: R 230 022 438.76

Start - Completion Date: October 2024 - August 2025

PROJECT PARTICULARS:

Development: Residential

Description: Construction of a new 300-unit complex, comprising 156 two-bedroom units, 108 one-bedroom units, 24 studio apartments, and 12 bachelor units. The development also includes a seating area with play equipment, a gatehouse, landscaped courtyards, and ample parking facilities.