



**TRI-STAR**  
CONSTRUCTION

LEVEL 1 BBBEE

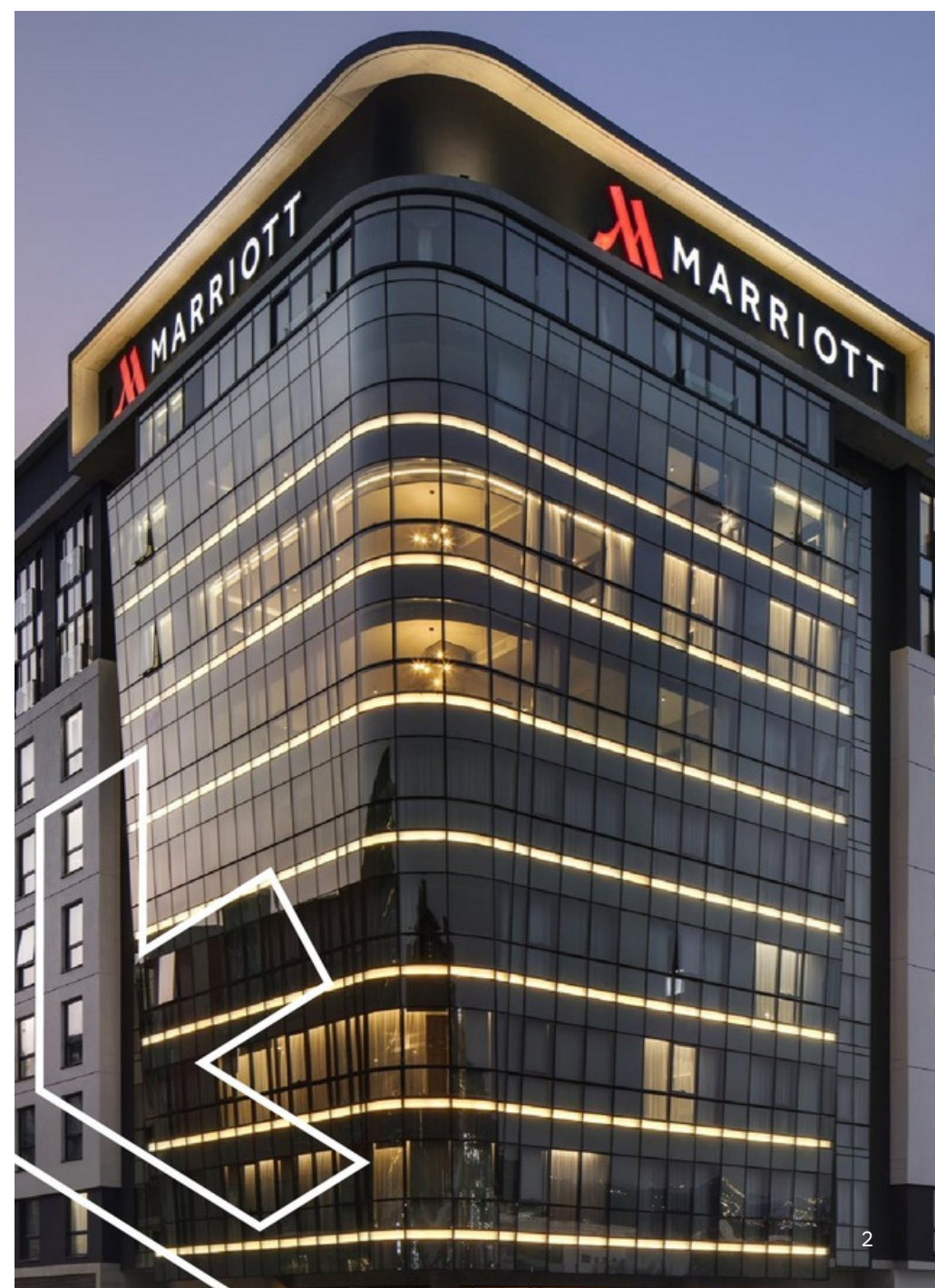


---

CORPORATE BROCHURE  
2024

# Contents

<b>About Us</b>	<b>3</b>
Our Journey	4
Our Values	5
Our Vision	5
Our Services	5
Group Structure	6
Leadership	7
Our Staff	8
Health & Safety	8
Plant & Equipment	9
MBA North Regional Safety Competition Awards	10
2022 Key Statistics	10
<b>Social Responsibility</b>	<b>11</b>
Transformation & BBEE	12
Training and Skills Development	12
Investment in Communities	13
<b>Projects</b>	<b>14</b>
Commercial Projects	15
Housing Mega Projects	16
Residential Projects	17
Student Accommodation	18
Retail Projects	19
Industrial Projects	20
Specialised Projects	21 - 22
Past Projects	23 - 24
<b>Affiliations</b>	<b>25</b>
<b>Contact Us</b>	<b>26</b>



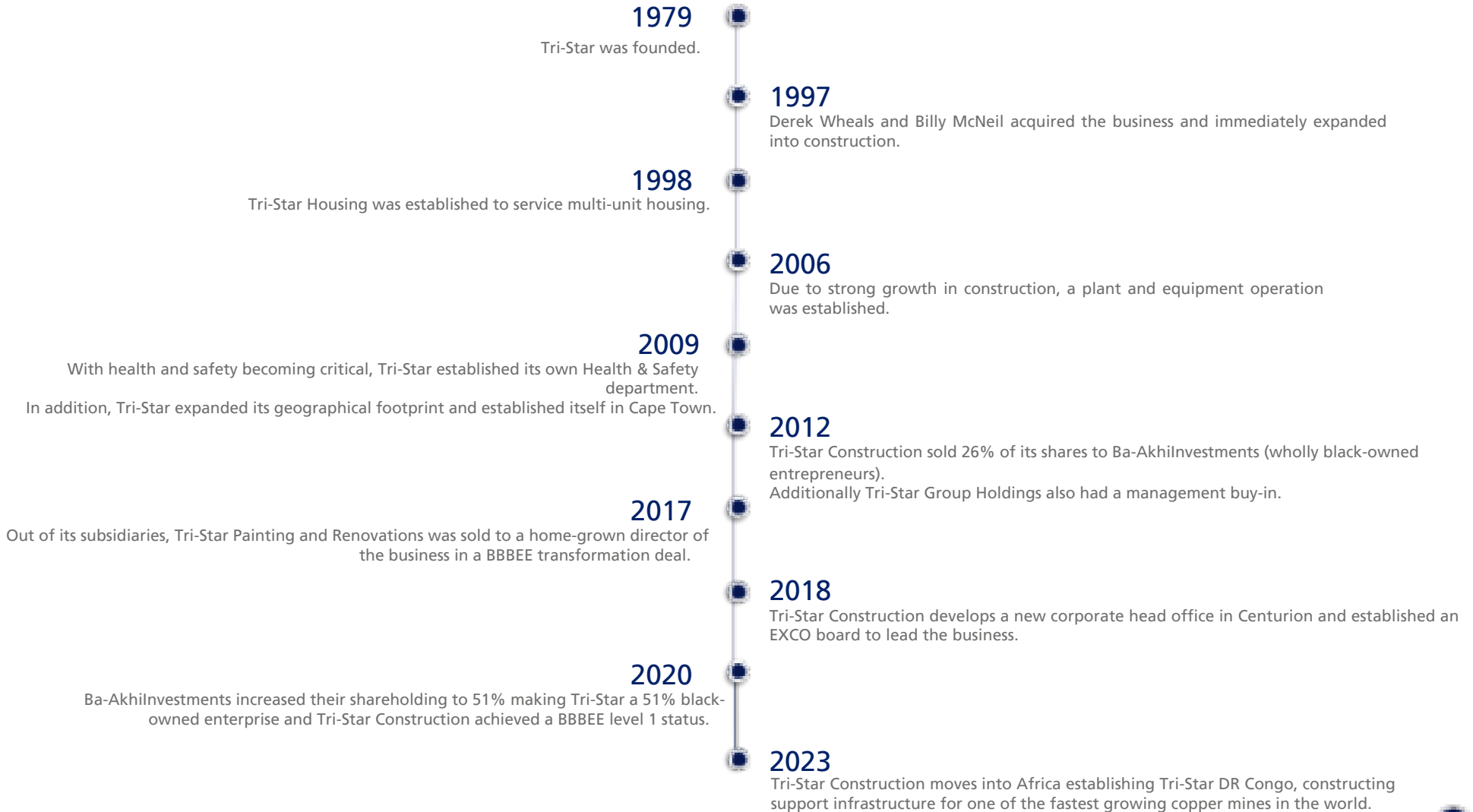


---

## About Us

# Our Journey

Established in 1979, Tri-Star Construction is a private, management-owned business that has evolved into a successful, sustainable, multi-disciplined, and reputable construction company.





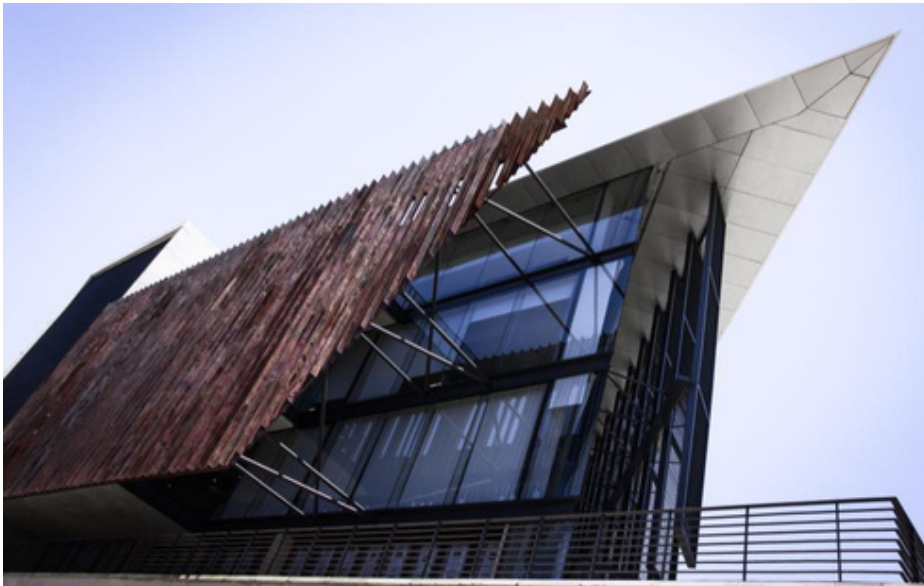
# Our Values

We pride ourselves on our integrity, operating in an open and transparent way, treating people fairly and with respect.

We recognise our responsibility to all aspects of Health and Safety. We want to make a positive contribution to society through social investment, uplifting our people through training, mentorship, education, and opportunity.

We build long term relationships with all our stakeholders.

We aim for excellence through innovation and collaboration to drive improved performance and deliver the best possible outcomes from our clients, our projects, our people, partners, and their wider community.



# Our Vision

Strive to be a highly capable, diversified construction company that will grow through opportunities that employ our core expertise and partnerships.

Growth will continue to be organic and controlled around our Tri-Star Construction core management, to ensure our values are infused and our culture entrenched.

Through good Corporate Governance, risk, and fiscal management we will ensure sustainability.

# Our Services

Tri-Star Construction has a very experienced and highly skilled management team and workforce that adopts a collaborative and hands-on approach to our relationships, delivering safe, high-quality products and services that respond to clients and industry.

Our extensive experience in the construction industry has enabled us to offer:

- Traditional Building Contracts
- Full Turnkey (Design and Build) Solutions
- Development Management and Property Development
- Client Partnerships, Public Private Partnerships (PPP), etc.

We have the experience and ability to construct Multi-Unit Housing projects, High Rise Residential, Commercial, Industrial, and Retail as well as Specialised Projects.

# Leadership



ALBERTINAH KEKANA  
Non-executive chairperson



MALOSE KEKANA  
Non-executive chairperson



DEREK WHEALS  
CEO

Tri-Star Construction is driven by a dynamic team of directors who are highly experienced in the field of construction and share the passion and vision of their shareholders.



# Our Staff

Our people are our business – they are our most valuable asset. Management is always available to its staff and there is open and transparent communication channels that allow for queries and issues to be addressed and resolved at any time.

Paramount to our strategy is continued investment in the training and advancement of our greatest asset, our people. This embraces procedures for regularly reviewing all aspects of our business and the motivation of our people.

We recognise the value of our human capital and create value for our employees through:

A merit-based rewards system of competitive remuneration.

Recognition and career advancement through training, education, and mentorship to encourage a collaborative range of skills and solutions.

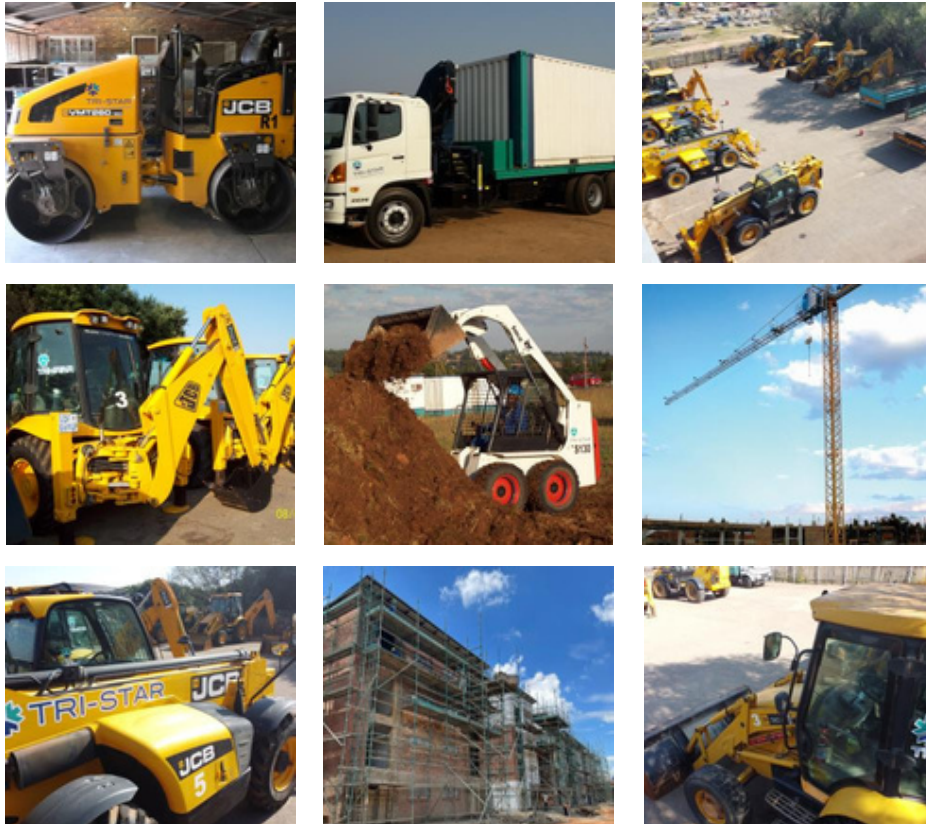




# Health & Safety

Tri-Star Construction has its own well-established Health and Safety division. Constant attention and diligence to our health and safety protocols has seen us achieve very high standards and win numerous awards.

Our Health and Safety division played an instrumental role during the Covid- 19 pandemic in assisting the MBA in developing strict protocols and an industry standard.



# Plant & Equipment

In 2006 Tri-Star Plant and Equipment was established as a subsidiary of Tri- Star Construction. This was largely due to Tri-Star Construction’s expanding business and rapid growth.

Its primary function is to provide a service to Tri-Star Construction whereby it supplies and maintains construction plant, equipment, and machinery to the highest standards. It also has its own premises and a dedicated management team.



## Plant Yard Key

A: Surplus Site Material  
 B: Containers & Parkhome Storage  
 C: Scaffolding Delivery Bay  
 D: Carports  
 E: Plant Bay  
 F: Plant Yard Office  
 G: Workshop Area

H: Scaffolding Spray Bay  
 I: Scaffolding Washbay, Clean & Repair Bay  
 J: Scaffolding Collection Bay  
 K: Tender Equipment  
 L: CETA Accredited Training Facility  
 M: Accommodation / Office Area

# MBANorth Regional Safety Competition Awards 2021 - 2023

Tri-Star Construction prioritizes Health and Safety regulations within the construction industry and by strictly adhering to the guidelines established by the MBA North, Tri-Star Construction has received numerous awards over the past three years, as listed below:

## 2021

- Category C (Less than R15 Million) -> Second Place: Clayville Ext 80
- Category D (R50 Million to R40 million) -> Second Place: Riverside Ext 35
- Best Performing Health and Safety Manager-> Ruan van der Merwe

## 2022

- Category D (R15 Million to R40 Million) -> First Place: Wits Gatehouse
- Category E (R40 Million to R100 Million) -> First Place: Kempton Towers
- Category E (R40 Million to R100 Million) -> Third Place: Riverside Ext 66
- Category F (R100 Million to R250 Million) -> First Place: Brooklyn House Phase 2
- Category F (R100 Million to R250 Million) -> Second Place: Mamelodi Square

## 2023

- Category C (Less than R15 Million) -> First Place: Wits Hillman House
- Category D (R15 Million to R40 Million) -> First Place: Riverside Ext 69
- Category E (R40 Million to R100 Million) -> Third Place: The Iris Phase 3

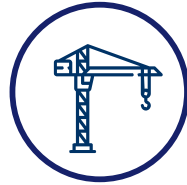


**MBA**NORTH

# Key Statistics



**Level 1**  
B-BBEE  
Status



**527**  
Completed  
projects



**50 000+**  
Home  
s built



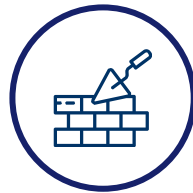
**402**  
Commercial, Industrial,  
and Retail buildings  
built



**5.2**  
Million m3  
concrete  
poured



**10 000+**  
Student Beds  
Built



**892+**  
Million bricks  
laid



**44**  
Years in  
business



**5.1**  
Million m<sup>2</sup> total  
area built



**33.7+**  
Million man  
hours  
created





## Social Responsibility



# Transformation & BBBEE

Transformation is a SA Government initiative driven by the Department of Trade and Industry. It aims to facilitate the involvement and participation of all historically disadvantaged individuals, broadening the country's economic base and stimulating economic growth within the country.

We are proud to participate in this deliberate initiative focusing on transforming and bringing about substantial change in the racial and gender composition of ownership, control and management within our company. As a result of this active and aggressive drive towards true transformation, we have been accredited with a B-BBEE level 1 status.

This is further underpinned by ownership transforming to 51% black compromising (25,5% black women, 25,5% black male).



# Training & Skills Development



Our people are the most important assets we have. Our inhouse bursary scheme continues to assist employees to acquire higher qualifications which improves efficiencies and quality product service. We also run mentorship programs which aims at ensuring deliberate transfer of critical skills to junior professionals within the organisation and our delivery partners.

We boast a Training Academy which has opened its doors for the 1st time in 2020 by welcoming 21 learners on an apprenticeship program funded by Construction Education and Training Authority (CETA) for the next 3 years.

We recently welcomed 15 new Electrical and 15 new plumbing apprentices through CETA funded programme. It is important to mention that a significant number of these apprentices consist of young women aspiring to become artisans.

These learners are sourced /recruited from previously disadvantaged communities such as Diepsloot, Clayville, Ivory Park, Soweto, Roodepoort and Fleurhof where Tri-Star Construction implements projects.



# Investment in Communities

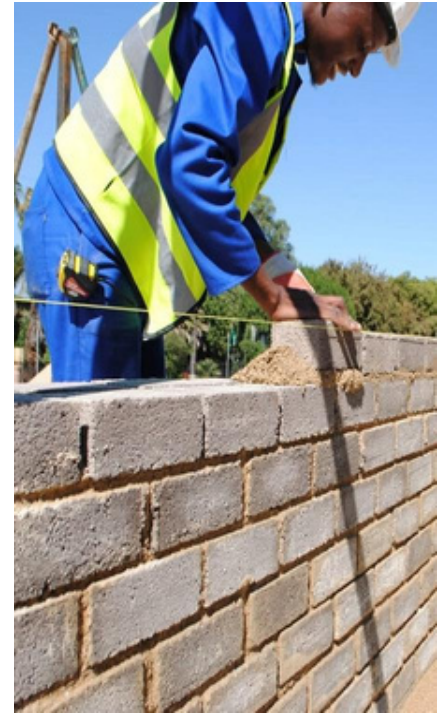
We are committed to uplifting the quality of life in the communities where we work. Typically, we establish at the outset of each project, the needs of “impoverished” communities.

Firstly, a community upliftment project is selected in conjunction with the community. Our Corporate Social Investment (CSI) Fund is utilized to implement the project for the benefit of the community.

Secondly, employment opportunities through the establishment of Small Medium and Micro Enterprises (SMMEs) for participation in the construction of the project are assembled.

We provide them with all the tools and opportunities to establish their business (SMME) by providing mentorship and assistance in business skills, financial management, quality & production control, etc.

Finally, we establish youth employment avenues for willing candidates. They get enrolled in our Tri-Star Training Academy for various learning paths i.e. apprenticeship programs in Construction to upskill and provide them .with the knowledge and expertise to be employed in the Construction Industry (Tri-Star Construction partner)





---

## Gauteng Featured Projects



# Commercial Projects



## Amdec House

Client: Amdec Property Investments Architect: Osmond Lange Architects

- Construction of new mixed use office development



## Radisson Hotel

Client: Akani Properties Architect: Bentel Associates International

- Construction of hotel
- Top floor sky bar/restaurant
- 5 floors consist of 248 rooms



## Centurion Square

Client: Professional Provident Society Architect: Boogertman & Partners

- Office development in 2 phases P grade office blocks
- 5 Star Green Rating



## Clientele

Client: Clientele Properties East Architect: AMA Architects

- 4 levels of offices
- 2 levels of basement
- parking 6 000 m2 in total



## Marriot Hotel

Client: Amdec Property Investments Architect: Osmond Lange Architects & Bentel Associates International

- 5 storey basement
- 8 floors hotel
- 8 storey apartments



## Tri-Star Construction Head Office

Client: Propvent 5 Architect: Boogertman & Partners

- Tri-Star Construction developed and built their own office block

# Industrial Projects



## DB Schenker

Client: JT Ross Properties  
Architect: Empowered Spaces

- 10 000 m2warehouse
- Ablution blocks
- Canteen area



## Crusader Logistics

Client: JT Ross Properties  
Architect: Empowered Spaces

- Construction of warehouse in the Plumbago Business Park



## The Stables

Client: VunaniProperties  
Architect: Roger Davies Architects

- Complete mini factory / warehouse and office development built



## Peri

Client: Peri Formwork Engineering  
Architect: Osman Lange Architects

- Building, Industrial & Civil Works for new warehouse



## Longmeadow Business Park

Client: Tri-Star Construction  
Architect: Empowered Spaces

- Head office for Tri-Star Construction



## Distell

Client: Distell  
Architect: De Villiers & Hulme

- Construction of new bottling line for Distell in Springs



# Residential Projects



## Kempton Square

Client: One Property Holdings  
Architect: Alsfine & Angus Architects

- Construction of 628 apartments
- 6 floors residential units



## Infinite

Client: Fantasy Property  
Architect: AMA Architects

- 200 luxury apartments
- 10 storeys
- 383 parking bays



## The Paddocks

Client: International Housing Solutions  
Architect: DBM Architects

- 384 sectional title units comprising three storey blocks



## Oaktree Village

Client: International Housing Solutions  
Architect: Boogertman & Partners

- 128 unit sectional title 4 storey walk-up development



## The Village

Client: International Housing Solutions  
Architect: Boogertman & Partners

- 284 sectional title walk-up residential units in eight separate blocks



## The Unison

Client: Unlocked Properties  
Architect: Entity Architect

- Construction of two four storey apartment blocks with a total of 204 units

# Mega City Housing Projects



## Riverside Precinct

Client: Valumax  
Architect: GWA Architects

- A total of 10105 units are being built



## Jabulani

Client: CalgroM3  
Developments Architect: CalgroM3

- A total of 2 474 units are being built



## Clayville Precinct

Client: Valumax  
Architect: GWA

- A total of 14138 units are being built



## Belhar (Cape Town)

Client: CalgroM3  
Developments Architect: SVA Architects

- A total of 1769 units are being built.



## Fleurhof

Client: CalgroM3  
Developments Architect: GWA Architects

- A total of 18200 are being built



## MalibongweRidge

Client: Co Devco  
Architect: ASA Architects

- A total of 5511 units are being built



# Student Accommodation



## Studios @ Burnett

Client: FeenstraGroup  
Architect: Boogertman& Partners

- 750 units
  - 1100 student
  - beds 15
- storeybuilding



## TMM Lofts

Client: TMM Holdings  
Architect: Urban Concepts

- 868 student bed accommodation built to completion in 12 months



## The Fields

Client: City Properties  
Architect: Studio 3 Architects

- Student accommodation and mixed-use development
- Rooms for 300 students



## Apartments on William

Client: Caliber 651  
Architect: Deon vdWesthuizen Architects

- Residential student accommodation 7 story building with 319 units



## City Edge (Cape Town)

Client: Xclutorque  
Architect: JordaanArchitects

- 577 student beds in 169 apartments comprising of two or three storeys



## Wits Junction

Client: RowmoorInvestments 616  
Architect: Boogertman& Partners

- Student
- Accommodation 1200
- beds 13 storeys

# Retail Projects



## Brightwater Commons Shopping Centre

Client: Allan Grey Properties  
Architect: Frame Architects

- This project was a complete transformation of the old waterfront in Randburg



## Midwater Shopping Centre Phase 2

Client: Patricio & Sons  
Architect: DBM Architects

- 14 000 m<sup>2</sup> extension to existing shopping centre



## Riverside Square Shopping Centre

Client: Riverside Square  
Architect: MDS Architecture

- New shopping centre with Shoprite and Cashbuild as anchor tenants



## Lonehill Shopping Centre

Client: Immobile Retail Investments  
Architect: LP Architects

- The complete refurbishment of the existing mall including the addition of 12 000 m<sup>2</sup>



## KeyWest Shopping Centre

Client: Acucup Investments  
Architect: Batley Partners

- The complete refurbishment of 55 000 m<sup>2</sup> including upgrading entrances



## Mamelodi Square Shopping Centre

Client: Putprop Limited / McCormick Group  
Architect: MDS Architects

- 16 000 sqm shopping centre



# Specialised Projects



## Drivelines Container Building

Client: Propertuity  
Architect: Plans at Work

- A mixed-use residential apartment block and retail building



## Mount Grace Hotel and Spa

Client: African Pride  
Architect: DSA Architects

- Hotel rooms and Spa refurbishments



## Vodacom Techno Park

Client: Vodacom  
Architect: GLH & Associates

- Additions: Admin Block / Dome / Security Centre / Wellness Centre



## Church of Scientology

Client: Ideal Org South Africa  
Architect: Bentel Associates

- Historical buildings were converted into a new establishment for the Church



## Houghton Clubhouse

Client: Seven and Twelve on Houghton  
Architect: Boogertman & Partners

- Modern clubhouse built including parking, kitchens, restaurants, change rooms



## Vodacom Data Centre

Client: Vodacom  
Architect: LYT Architects

- Specialised multiple service centre for Vodacom including office space



---

## Cape Town Featured Projects





## Park Inn Hotel by Radisson

Client: Raddison Hotel Group  
Architect: SKA Architect

- The 4-star hotel features 120 rooms.



## 17 Park Lane Office Park

Client: GIMCO  
Architect: MLH Architects & Panners

- This building is, as far as the GBCSA is aware, the first Chapter 9 Institution in SA to be green star SA rated.



## Hout Bay Centre

Client: Cape Coast Properties  
Architect: Rick Brown & Associates

- The retail centre was completed in January 2015.



## City Student Accomodation

Client: Xclutorque (Pty) Ltd  
Architect: Jordaan Architects (Pty) Ltd

- 577 student beds, 169 Apartments comprising of two or three storeys. Housing of approximately 600 students.



## Maitland Mews

Client: Calgro M3 Developments Pty) Ltd  
Architect: CTE Consulting

- 5 Blocks of 4 storey walk ups. Completed in March 2023.



## Belhar PKT 13

Client: Calgro M3 Developments Pty) Ltd  
Architect: CTE Consulting

- 6 Blocks of 4 storey walk ups Sectional Title Units. Completed in December 2021.

# Past Projects

## COMMERCIAL

Absa Kruis Street  
Absa Melville  
Absa Midrand  
Absa Vanderbijlpark  
Afrikings  
Afrox  
Alberton Ford Barloword  
Barons Woodmead  
Redevelopment  
Bastion Graphics  
Bentley Office Park  
Bhp Billiton  
Bowling Street  
Casseys Auto  
Centurion Close  
Centurion Square  
Chrysler Jeep Dodge  
Dealership  
Clientele  
Commerce Square  
Constantia Park Office Park  
Cozens Head Office  
Diagonal Street  
Eds Building  
Ellies  
Empire State Building  
Essenby House Phase 11  
Exxarro  
Fiat Boksburg  
Flower Market  
Ford & Mazda Dealership  
Lakeside Mall  
Fourways Gardens Clubhouse  
Gde Benoni  
Gde Springs Avenue Towers  
Gillooly's View

Grayston Office Park  
Gwm Motors  
Hampton Office Park  
Harrison Street Offices  
Helen Road  
Hollyberry  
Houghton Office Park -  
Common Areas  
Ideal Org - Phase 2  
Innovation Group  
Jatex Rosslyn  
Jeep Dealership  
Jeppe House  
Kees Beyers  
Landdrover Eastrand  
Lightstone  
Longmeadow Business Park  
Menlyn Corporate Park  
Mtn 14th Avenue  
Navarre Complex  
Nedbank Conference Centre  
Nestle Building  
Norman Goodfellows  
Panasonic  
Poyton House  
Radison Hotel  
Rau Residence -  
Experimental Theatre  
Riverwalk Office Park  
Rockwell Automation  
Route 24  
S P I  
Samro Offices  
Sasria  
Standard Bank Centurion  
Standard Bank Quagga  
Centre Sunnyside Office  
Park  
: Block D  
Surestream Business Park  
Tcta

The Forum  
The Hub - Princess Crossing  
The Sound Studio  
Tuinhof Office Park  
United Randburg  
Virgin Money Absa Capital  
Viva Gym Montana  
Vodac House  
Vodacom - Phase 6 Earth  
Station  
Vodacom Msc  
Vodaworld  
Vodaworld Wellness  
Centre Woodmead Auto  
Woodmead Commercial  
Park World Bank  
Irene Corporate Corner Tri-  
Star Head Office

## INDUSTRIAL

A.J. Broom  
Act - Meadowdale  
Allandale Park  
Alrode Warehouse  
Anchor Industrial Park  
Bathroom Bizarre  
Bevcan - Meadowdale  
Cargo Carriers  
Crown Mines  
Incinerator Crusaders  
DB Schenker  
Distell - Ecowash  
Distell - Phase 7  
Distell - Primary Production  
Park  
Distell - Tank Farm  
Distell - Water Storage  
Distell - Water Storage

Hino Trucks  
Meadowdale Warehouses  
Orlek Meadowdale Paarlweb  
Media  
Peri  
Plumbago  
Printout Business Forms  
Projects Concern  
Manufacturing  
Regent Hill Office Park  
Salt  
Scientia Park

Sedgeley  
Warehouse  
The Links  
Thermafex  
Trinity Cables  
Unit Inspection  
Value Logistics  
Vector Logistics  
Wizard Clothing -  
Meadowdale

## RESIDENTIAL

Ashbourne  
108 Fox Street -  
Metropolitan Building  
51 Juta Street  
African Leadership  
Academy Apartments On  
William Ashford  
Ashton Manor  
Bali Villas  
Bosman Building  
Brampton  
Cartiera  
Castellano  
Caversham

CBD Residency  
Cherrystone  
Craig's Place  
Cranbrook Estate  
Drivelines  
Fasser House  
Featherwood Estate  
Frank & Hirsch  
Grand Chateaux  
Harrington  
House Ferreira  
House Magome  
Infinite  
Jeffrey's Place  
Khan's Corner  
Merbrook  
Mio Palazzo  
Montebello  
Norscot Guest House  
Oakland Houses  
Park Street  
Parktown Boys Hostel  
Pennyville  
Pirates Building  
Pixley House  
Rau Residence - Dean  
Of Students  
Renaissance  
Riverside  
Sherbourne Estate  
Southdowns Estate  
Studios @ Burnett  
Talavera  
Tannenberg  
Tau Building  
The Fields  
The Glades  
The Links  
The Paddocks

The Saints  
The Village  
Unilofts  
Villa Di Castello  
Warmbaths Retirement  
Village Wits Junction  
Kempton Square

## RETAIL

Blubird Shopping Centre  
Boulders Shopping Centre  
Brightwater Commons  
Brooklyn Square Shopping  
Centre  
Checkers Daspoort  
Checkers Waverley  
Craighall Park Shopping  
Centre Damdoryn Shopping  
Centre East Rand Value Mall  
Eastgate Shopping Centre  
Eastway Phase 4  
Five Star Junction  
Hatfield Plaza Shopping  
Centre Highlands Shopping  
Centre Kempton City  
Keywest Shopping Centre  
Leaping Frog Shopping  
Centre Lighting Warehouse  
Lonehill Shopping Centre  
Mayville Mall  
Mega City Mall  
Megamark Mall  
Midwaters Shopping Centre  
Mountain View Shopping  
Centre  
Opera Plaza  
Pick 'N Pay -West Street



# Past Projects

## RETAIL (CONT)

Pick 'N Pay Bright Water Commons  
Pick 'N Pay Craighall Park  
Pick 'N Pay Pretoria  
Pick 'N Pay Quagga Centre  
Pick 'N Pay Rivonia  
Princess Crossing  
River Crescent Shopping Centre  
Sportsman's Warehouse - Witbank  
Village View  
Weylandts

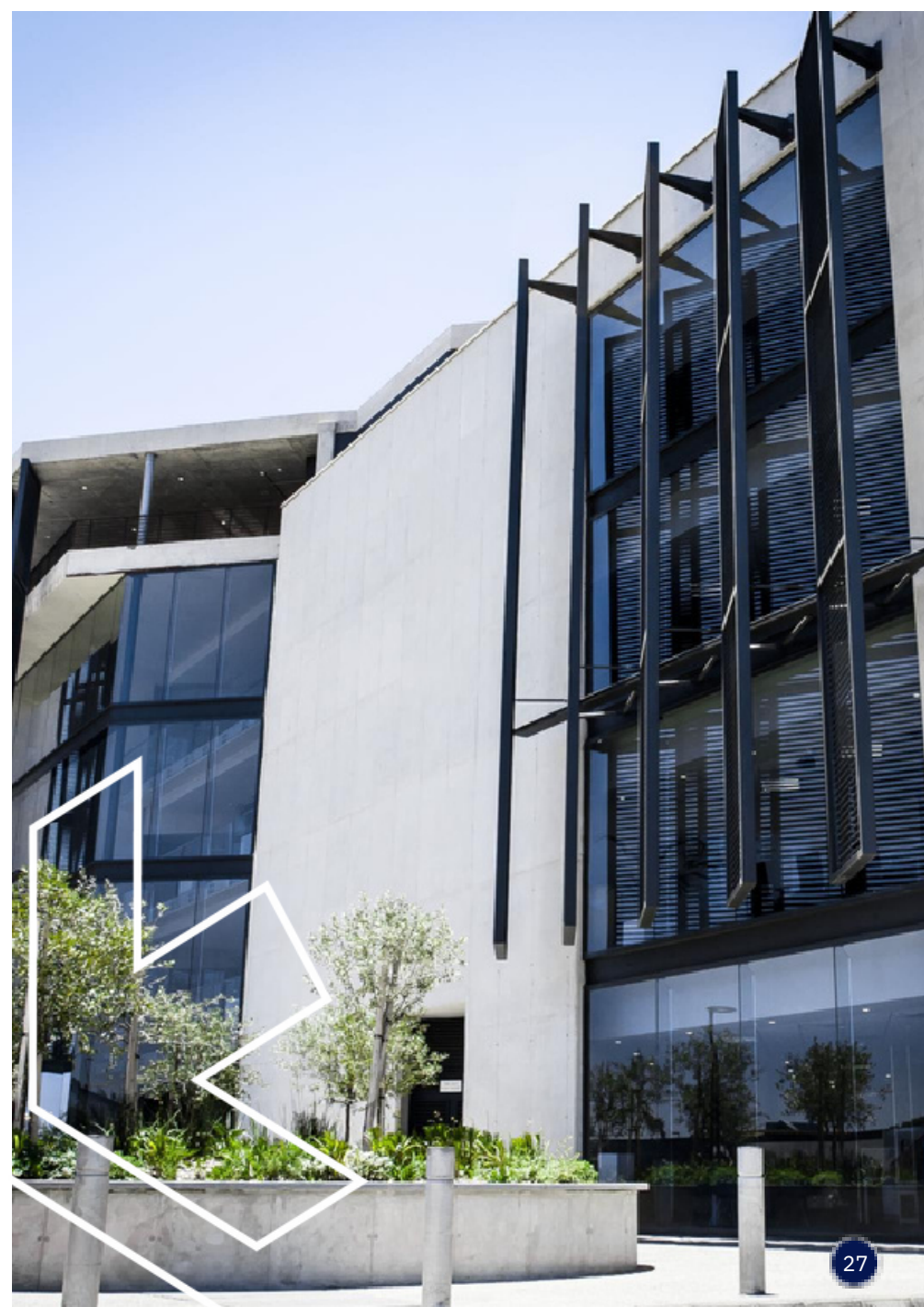
## SPECIALISED

Bedford Gardens Hospital  
Benoni Oncology Centre  
Brenthurst Clinic  
British Council  
Cosmo Mall Bridge  
Crawford College  
Dainfern Estate Country Club Don Apartments  
Emfuleni Golf Club  
Garden City Clinic  
Hammanskraal Pedestrian Bridge  
Houghton Golf Clubhouse  
Kensington Clinic  
Lds Church - Daveyton  
Lds Church - Ellis Park  
Lds Church - Roodepoort  
Lds Church Kwathema  
Life Hospital - Flora Clinic

Madudeni Hostels  
Mount Grace Hotel & Spa  
Netcare Garden City  
Hospital Netcare Montana  
Hospital Netcare Rehab  
Hospital  
Norfolk House  
Novo Energy Gas Station  
Park Station Imisson  
Rivers Church  
Scientology - Johannesburg  
Scientology - Kensington  
Scientology - Pretoria  
Society For Animals In Distress  
St Albans College  
St Stithians College  
University Of Pretoria Oral & Dental Hospital  
Varsity College  
Virgin Active Brightwater Commons  
Virgin Active Lonehill  
Viva Gym Hillfox  
Wits - Convent  
Wits - Foyer Upgrade  
Wits - Gatehouse  
Wits - New School Of Arts  
Wits - Phase 9a  
Wits - Senate House  
Wits & Parklane Clinic  
Parkade Army Foundation  
Kumba Resources  
Robot Hardware  
Kempton Square

## REFURBISHMENTS

Brightwater Commons  
Design Square Brooklyn  
Hatfield Plaza Shopping Centre  
Kempton City  
Keywest Shopping Centre  
Lonehill Shopping Centre  
Quagga Centre  
Cozens Head Office  
Nedbank Conference Centre  
United Randburg  
Woodmead Commercial Park  
World Bank  
108 Fox Street – Metropolitan Building  
Bosman Building  
Dainfern Estate Country Club  
Mount Grace Hotel and Spa  
Netcare Garden City Hospital  
Standard Bank Ablutions  
Wits University - Pedestrian Gate





# Affiliations






---

## Contact Us

### GAUTENG

 +27 12 687 1000

 [info@tri-star.co.za](mailto:info@tri-star.co.za)

 Irene Corporate Corner 33  
Via Salara Crescent, Irene,  
Centurion, 0157




[tri-starconstruction.co.za](http://tri-starconstruction.co.za)

### CAPE TOWN

 +27 21 001 0062

 [info@tri-star.co.za](mailto:info@tri-star.co.za)

 25A The Waverley Business  
Park, Weymouth Rd,  
Mowbray, Cape Town, 7705